

# MIX studio

M ultimedia / I ntegration / X –Disciplinary

Prof. Linn Song  
Prof. Karin Sander  
Dipl.-Ing. (FH) Wolfgang Jäger  
Faculty of Interior Architecture  
University of Applied Sciences Rosenheim  
Hochschulstrasse 1  
D - 83024 Rosenheim  
T. +49 8031 805 - 577 / -596  
F. +49 8031 805 - 552

<http://www.mixstudio.eu>  
<http://innenarchitektur.fh-rosenheim.de/Song>



2008 - founding of MIXstudio by prof. linn song  
2009 - dipl-ing wolfgang jäger joins as assistant  
2012 - prof. karin sander joins as co-director

i believe that the *core* of education does not lie in teaching/learning the technical/practical knowledge one „needs“ to get a job, but rather in critical and conceptual thinking, which transcends practical knowledge, due to the fact that technological standards and practices are always changing and new problems that need to be solved arise.

i attempt to examine (interior) architecture through a lens that does not see design as a formal exercise in form and beauty, but rather as a process of creation centered around human needs – practical, emotional, ephemeral. What’s important is not „what things look like,“ but rather „what things do (to us).“ Every two years a new theme is established around which projects, courses and excursions are formed. They intend to serve as an interdisciplinary counterweight to the very formal, as well as technically and practically oriented (interior) architectural education at universities of applied sciences in germany.

the following pages present an overview of my activities within and ideals that I try to convey through the MIXstudio in general as well as the focus on service-learning/design-build/communal/paticipatory design projects in particular.

The MIXstudio was founded in 2008 by Professor Linn Song and attempts to take a holistic look at many facets of design and uses social engagement as a pedagogical / didactic resource (so-called "service learning").

Although the agenda and parts of the program of the studio often appear to be more theoretical in nature, the concept of the studio emerges out of the idea that theory and practice are in essence the same thing. They manifest themselves sometimes in different "languages" and forms, but both are an attempt to take on current trends, to understand their relationship with the past, and to subsequently make speculations about the future. The boundaries are fluid and the issues into which we delve are intended to help promote this understanding, since the strict separation / organization of separate categories tend to support a very narrow view of the discipline of design and the world. The question of "depth" in inquiry will still be relevant - but yet it must be approached differently in combination with a "breadth" in understanding. The work of this studio hopes to bring new impulses from "marginalized" areas of our discipline into our conscience, or even into our main "field of vision" in order to bring issues, problems, and inspiration for the present and future into the light of study and action.

Prof. Song's underlying theme is the assertion is that everything we do as designers is a political act...and the questions that arise are, "Do we follow or define?"..."Are we solely in the industry of 'service'?"...or "How do we expand our 'radius of action' as well as relevance and role in solving (societal) problems?" Due to the general nature of the majority of our work in the profession, we are often "servants of wealth" and to a great degree we unfortunately underscore this idea in the way we educate. Thus, it is essential to understand the cultural context in which we operate in order to question structures of power and to find and take a personal position to guide future actions and operations.

# macht und raum | pedagogy of space 2014

garden pavillion and kindergarten

partner: fachklinik für suchterkrankungen alpenland, bad aibling





the site





Bayern-online - © Fachhochschule Rosenheim



jury & group critique





construction (students and patients)









# f **IX** itup I pimp my bauwagen 2010-2011

mobile diy bicycle repair shop

partner: caritas youth and family services, rosenheim





the construction trailer „before“

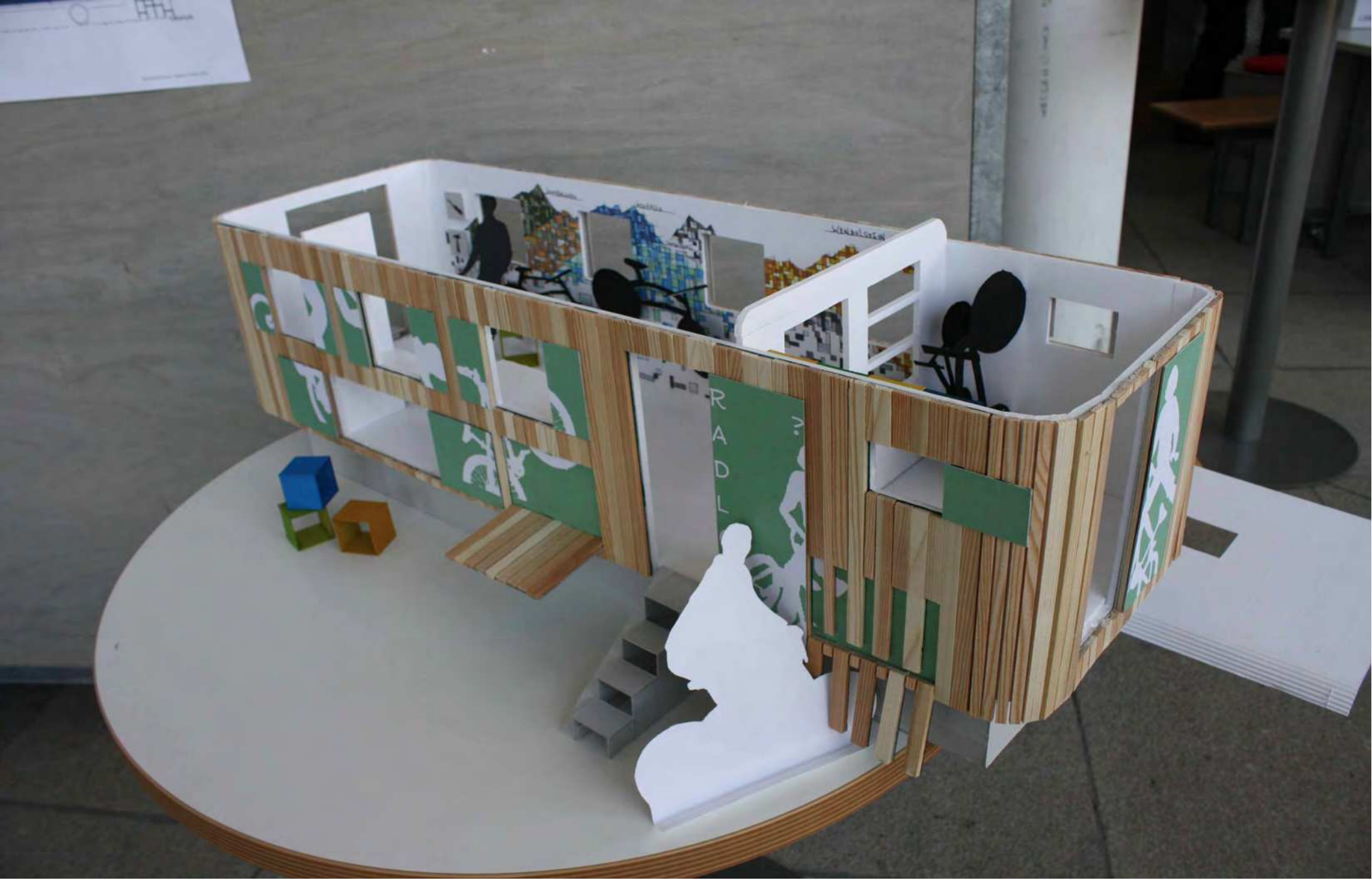








jury w/caritas and users (neighborhood youth)



the winning design















„topping-out“ ceremony







custom lighting fixture





custom light

















the construction trailer „after“ / storage glasses, coat hooks





dedication ceremony w/mayor

# franziskushaus altötting 2011-2012

interior landscapes (barn) & pro quadratmeter (guesthouse)

partner: slw / franziskushaus altötting





the barn





workshop / idea collecting w/youth (users)





mid-term jury w/director, teachers, artists

**MIX** studio  
M ultimedia / I ntegration / X – Disciplinary



various working models

**MIX** studio  
M ultimedia / I ntegration / X - Disciplinary





# bHaAuUmS 2019-2013

handicapped-accessible treehouse

partner: city of munich, department of parks and gardens





introductory design charrette „vessel/protection“

**MIX** studio  
M ultimedia / I ntegration / X – Disciplin ary

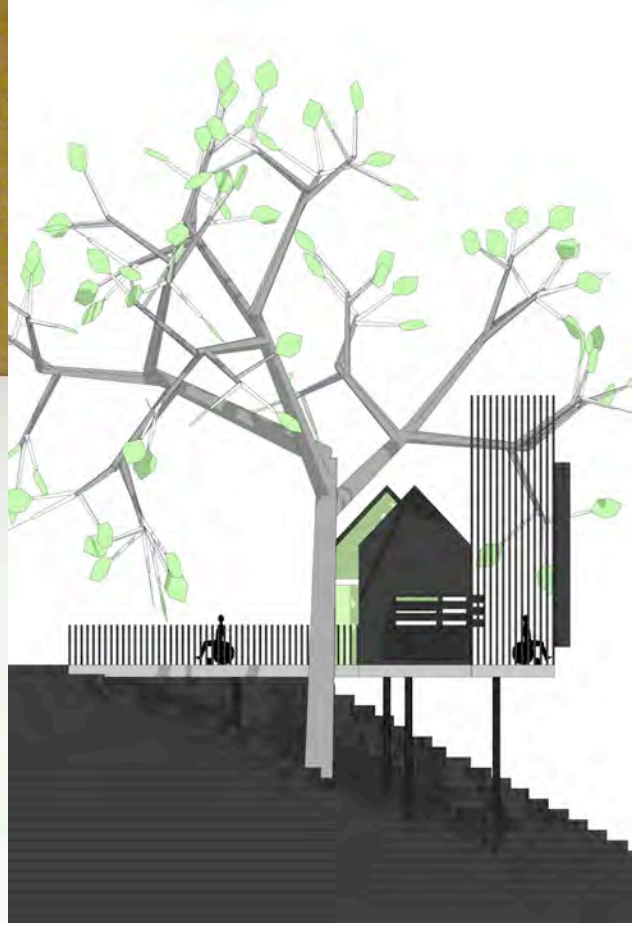


interviews and conversation with handicapped





various working models



winning design (1st model) selected by students and city of munich







# stopmotion 2009, 2011

2-day stop-motion film workshop with neighborhood youth  
partner: multicultural youth center westend & hauptschule ridlerstrasse, munich













# max & moritz 2011/2012

interior space installation for book illustration exhibition

partner: city art museum/gallery, rosenheim

In cooperation with: prof. karin sander, prof. james orrom



intro charrette „favorite literary passage &  
interpretory object“

**MIX** studio  
M ultimedia / I ntegration / X – Disciplinary





mid-term presentation with exhibition curator





study model, main gallery





installation, side gallery



installation, main gallery





Alles Familie

installation, side gallery

nd nicht den Boden berühren Popel schleudern Läuse Muttervat Bottasche  
sein, auf den Kissen Puppenhaare finden Scherben, im Laufhaus aus Milch schneiden  
tschigen Scheuerlappen Badewasser mit Angst anfassen zuerst ben dürfen an haben Schlamm bern  
nach Hause kommen Sauerampfer sammeln Mittags spielen wachsen, Haaren

interactive installation, side gallery



# draw the line 2013

3-day „action“ design + paint (training room for boxing club)  
partner: boxing club, rosenheim











# orchestra without eyes 2011

describing space through sound

guest instructor (music pedagogy): Janine Schmidt, LMU



students dismantled 7 washing machines





docent janine schmidt conducting 2-day rhythm workshop









# internationale workshops

de • gr • jp • nl • usa



















How to watch the Video...

1. put on the earphone and push [B]
2. listen to 'a-i-u' in Japanese and Japanese.
3. When you look over the laptop, you can see funny face like this.
4. Thank you for your listening. (GUEST)





























































# MIXtalks: food for thought

gäste aus dem in- und ausland









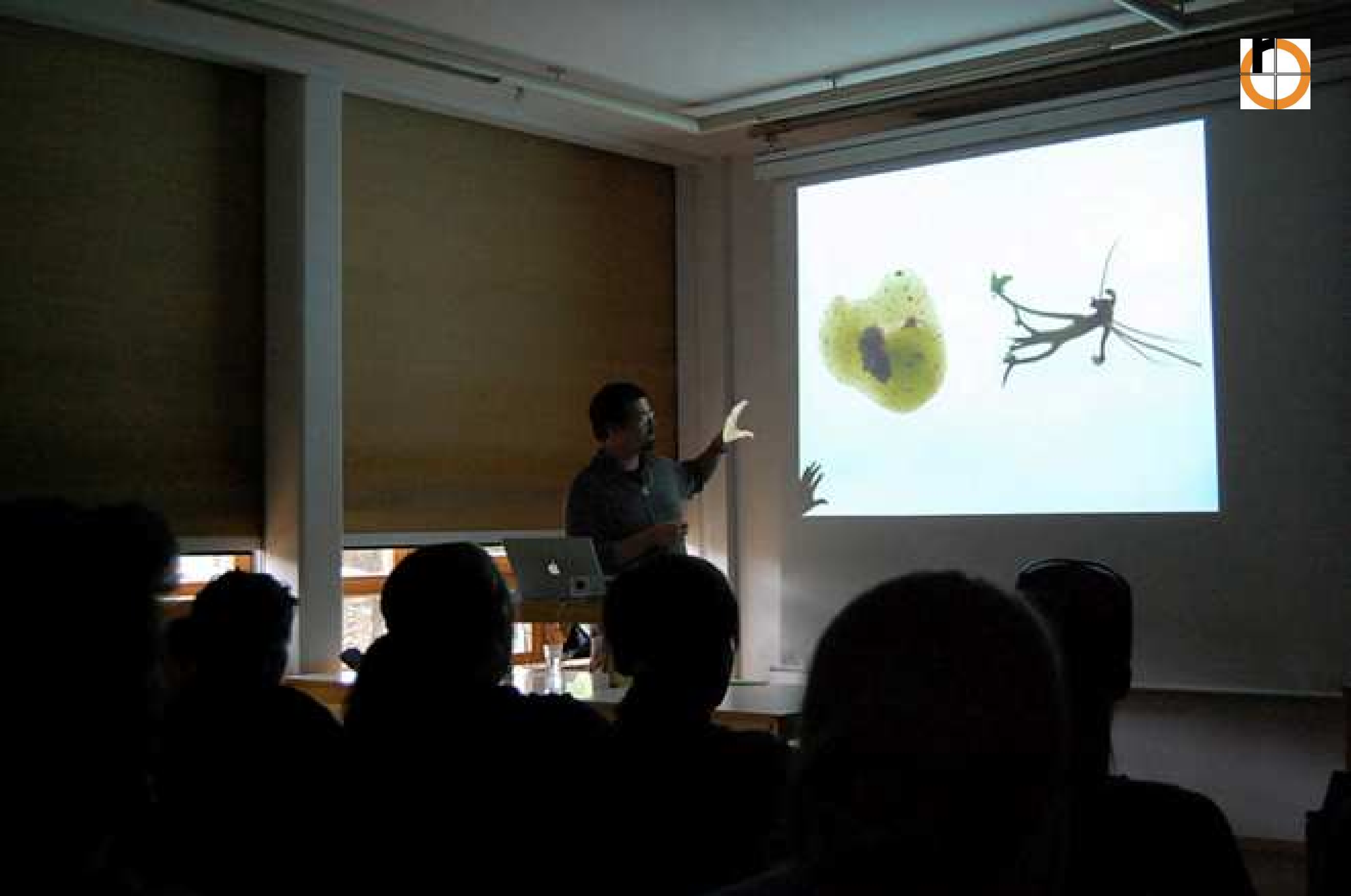




















# fachwissenschaftliche wahlmodule





















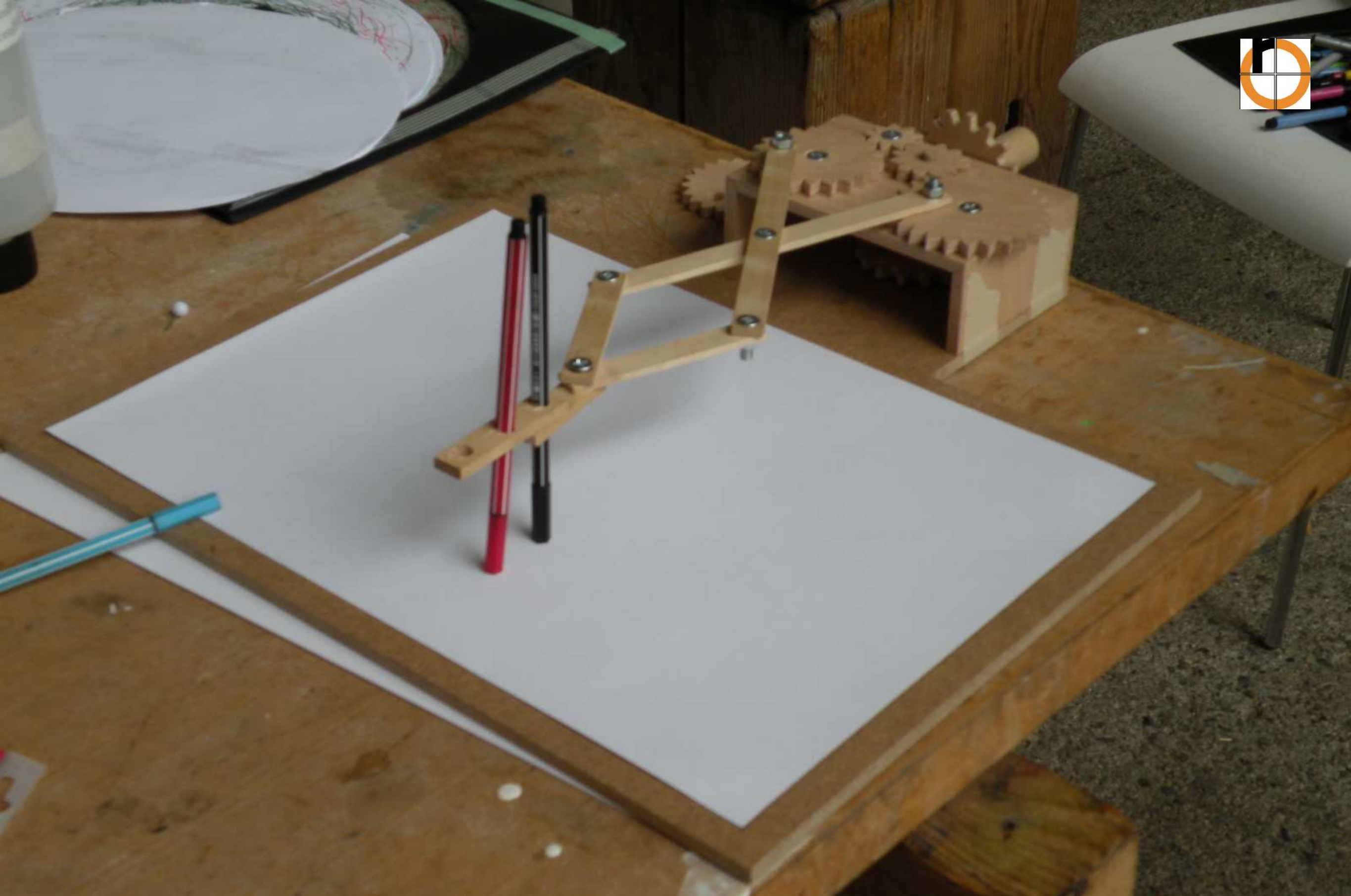
























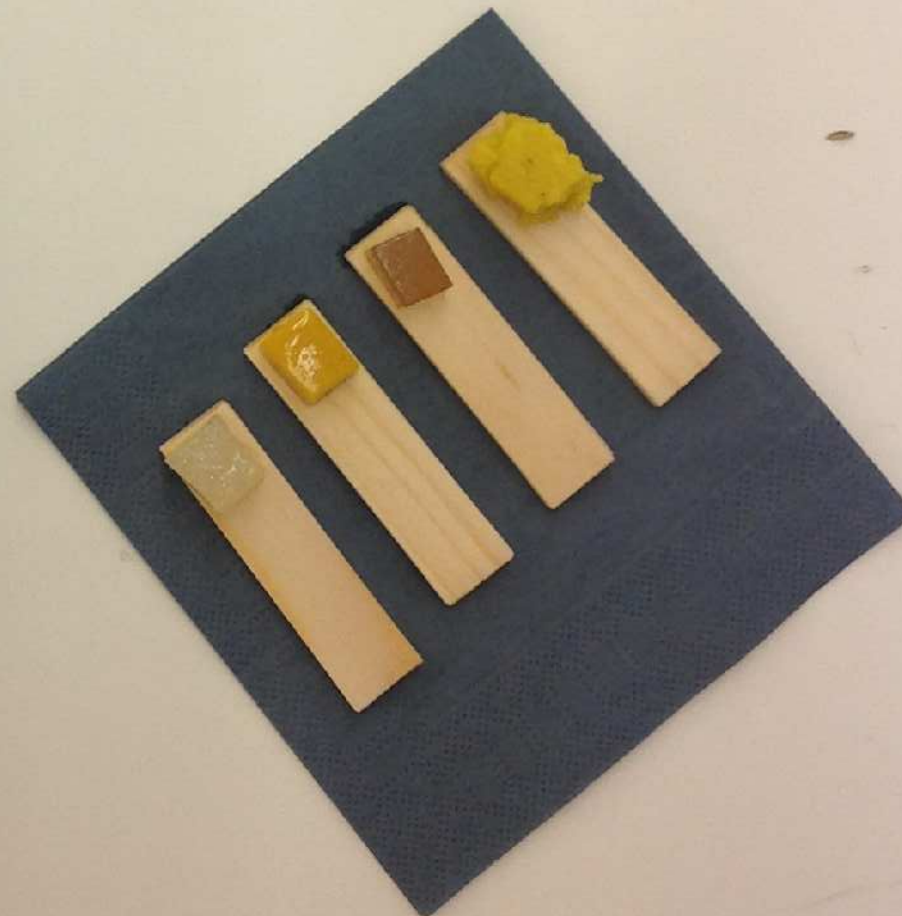




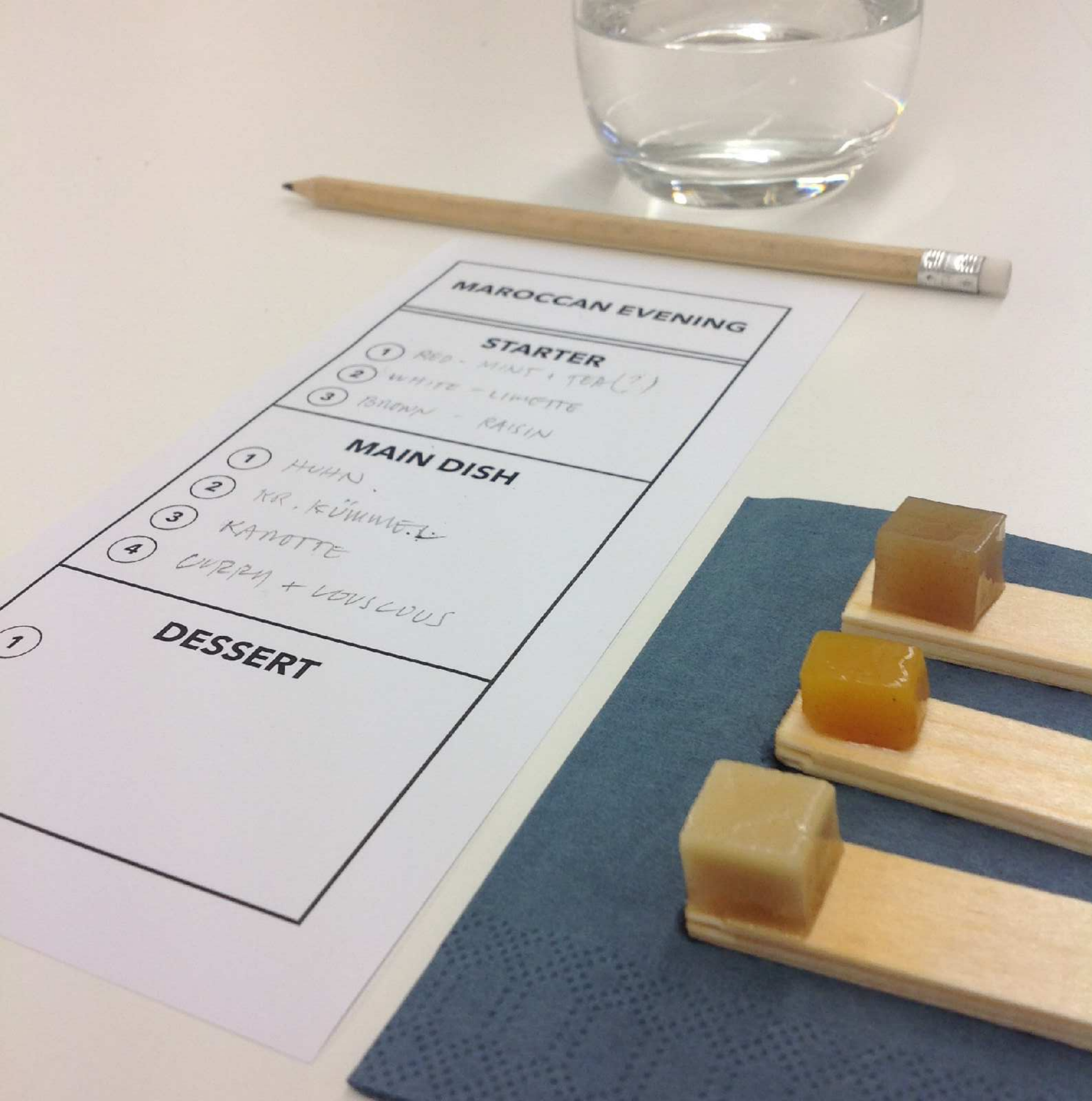




MAROCCAN EVENING	
<b>STARTER</b>	
①	RED - MINT & TEA(?)
②	WHITE - LIMETTE
③	BROWN - RAISIN
<b>MAIN DISH</b>	
①	
②	
③	
④	
<b>DESSERT</b>	
①	
②	
③	



















**MIX** studio





# MIXmediareisen

AT • BE • CH • DE • ES • FR • IT • JP • LU • NL • USA





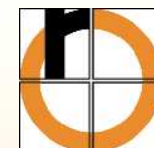




















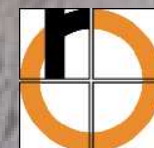




















































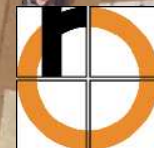
















# MIXfeste

1x pro semester | ausstellung • dialog • musik • food • fun





















































# MIX studio

M ultimedia / I ntegration / X -Disciplinary

Prof. Linn Song  
Prof. Karin Sander  
Dipl.-Ing. (FH) Wolfgang Jäger  
Faculty of Interior Architecture  
University of Applied Sciences Rosenheim  
Hochschulstrasse 1  
D - 83024 Rosenheim  
T. +49 8031 805 - 577 / -596  
F. +49 8031 805 - 552

