

Rosenheim

Technical University
of Applied Sciences



Fun Things To Do

for our International Students and Guests

If you are losing your leisure, look out! - It may be you are losing your soul.

Virginia Woolf

Table of Contents

Getting Around

Train or Bike 4

Summer Activities

Hiking 6

Summer Activities

Biking, Hiking and Swimming 9

Winter Activities

Hiking and Sledding 16

City Trips

Around Rosenheim 20

Other Trips / Activities

Culture and Sports 24

General Information

Public Holidays in Bavaria 27

Fun Things to Do

In Burghausen / In Traunstein 28

Out of Rosenheim

Mountains, Lakes, Cities and More 30

Published by: **Technische Hochschule Rosenheim Technical University of Applied Sciences**
Hochschulstrasse 1, 83024 Rosenheim, Telefon +49 (0)8031 805-0, www.th-rosenheim.de; Responsible under
German press law: Prof. Heinrich Köster, President; Editorial staff: Tatjana Erlewein; Date: March 2023

Dear International Guest,

Welcome to Rosenheim Technical University of Applied Sciences (TH Rosenheim)!

You will be spending a splendid exchange semester, studying a full degree programme or just visit one of our four campuses of TH Rosenheim: Rosenheim, Burghausen, Mühldorf or Traunstein. Beautiful surroundings in one of the most attractive regions in Germany await you - particularly in terms of quality of life and recreational activities.

This guide will introduce excursions in and around TH Rosenheim including the amazing Chiemgau to you. There are plenty of activities to do and to see. Try them all out and share with us if you like:
international@th-rosenheim.de

Please notice that the following advertised activities are private leisure activities and will occur at your own risk. Prices stated are subject to change. Please check the websites before planning your trip.

Enjoy awesome upper Bavaria!
Your Team at the International Office of TH Rosenheim



Picture: Max Baudry

Getting Around

Train or bike

DEUTSCHE BAHN

The cheapest way to get around in Bavaria on train, is the Deutsche Bahn (DB) "Bayern Ticket". The ticket is valid from 09:00 am to 03:00 am on the following day, all day on weekends, and on Bavaria-wide public holidays. You can also use the ticket for further public transport in Bavarian cities.



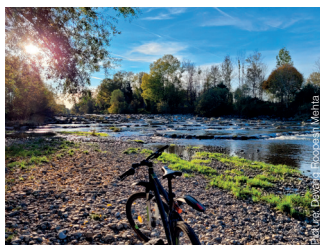
Prices (2nd class) € 27.00 (one passenger)
plus € 9.00 per extra passenger (max 4)

Please notice: Train tickets bought well in advance are cheaper and depending on the fare can be rebooked.

>> www.bahn.com

SPECIAL MONTHLY TRAIN TICKET

If you stay longer and want to get around in Germany on the train, starting from 1 May 2023, there is an offer to use regional trains and public city transport at a monthly price of € 49.00 (2023). Prices are subject to change.



BIKE SHOP

For biking trips you can rent a bike e.g. at the following shop:

Fahrrad Kerscher

| Opening Hours | |
|---------------|-------------------|
| Mon – Fri | 9:00 am – 6:00 pm |
| Sat | 9:00 am – 1:00 pm |



Address

Nikolaistr. 12, 83022 Rosenheim, +49 (0)8031 12966, info@fahrrad-kerscher.de

>> www.fahrradshop-rosenheim.de

SUMMIT HOCH4 PLUS

If you stay longer and plan to visit more than one summit, buy the combination ticket that includes a return trip with all four mountain railways in the region plus reduced admission to two thermal baths (Chiemgau Bad Endorf and Bad Aibling).

The following cable cars are included in the Summit Hoch4 plus:

- Wendelstein
- Hochries
- Kampenwand
- Hocheck

Price € 89.00

>> www.chiemsee-alpenland.de/planen/gastekarte-kombitickets/gipfel-hoch4-plus

Summer Activities

Hiking

KAMPENWAND

Hike at the beautiful mountain plateau of Kampenwand which elevates up to 1,669 m high and be amazed by the gorgeous view. Visit different restaurants/mountain lodges.

How to get there?

By train and cable car: Take the 40 min train from the Rosenheim main train station to Aschau (Chiemgau). You have to transfer trains in Prien am Chiemsee. Walk from the train station in Aschau to the cable car station (Kampenwandseilbahn). The cable car is very significant because it is the oldest cable car in the area.

Costs

Bayern Ticket: € 27.00 plus € 9.00 per extra passenger (max 4)

Price for cable car: depending on time, check website (€ 21.00-27.00)

Cable car opening hours: Mon – Sun 9:00 am – 5:00 pm / 6:00 pm in summer

Address: An der Bergbahn 8, 83229 Aschau im Chiemgau

>> www.kampenwand.de

WENDELSTEIN

Hike up the Wendelstein mountains which rank up to the highest mountain close to Rosenheim with its 1,838 m. Alternatively take the cable car. Due to its exposed location, you can enjoy a fantastic panoramic view of the Alps on top of the mountain and visit the Wendelstein chapel and cave.

How to get there?

By train and cable car: From the Rosenheim main train station take the train to Holzkirchen. In Holzkirchen you transfer trains and get on the BOB train to Osterhofen (Oberbayern). Get off at the Osterhofen train station. Walk 5 min to the valley station of the cable car (within sight, use of the underpass).

Costs

Bayern Ticket: € 27.00 plus € 9.00 per extra passenger (max 4)

Price for cable car: ascent and descent is € 26.00

Cable car opening hours: Mon – Sun 9:15 am – 4:00 pm / 5:00 pm in summer

Address: Wendelstein, Osterhofen 90, 83735 Bayrischzell

>> www.wendelsteinbahn.de/en/index

HOHE ASTEN

Come to visit Hohe Asten (1,104 m), one of the highest farms with a mountain lodge (Berggasthof) in the area which is open throughout the year (closed on Thursdays and Fridays). This makes it ideal for summer and winter hiking tours and it is the most popular short walk/hike in the region.

How to get there?

Take the train from the Rosenheim main train station to Flintsbach (16 min). Walk along the Bahnhofstraße and turn right towards Innstraße. After passing Innstraße turn left at Kufsteiner Straße. After about 50 m turn right to Astenweg which takes you in a few minutes to a parking lot for hikers (Wanderparkplatz) near the Falkenstein ruins. From the parking lot, you can hike up the Hohe Asten (about 2 hours/altitude difference 650 m). It is an easy forest walk.

Costs

Train ticket: € 5.80 one way

Cable car opening hours: Sat, Sun + Mon 9:00 am – 6:00 pm
Tue + Wed 9:00 am – 11:00 pm

Address: Mountain lodge Berggasthof Hohe Asten, Hohe Asten 2,
83126 Flintsbach am Inn, +49 (0)8034 2151

>> www.hoheasten.de





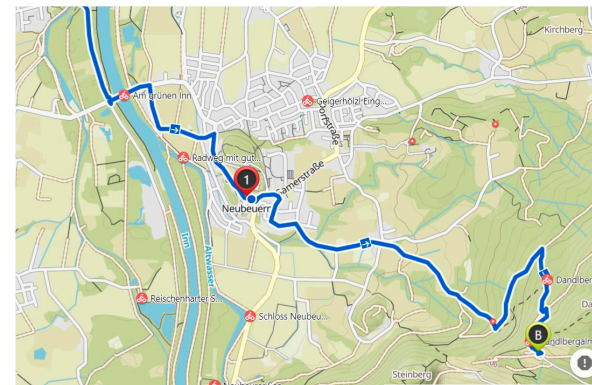
Summer Activities

Biking, Hiking and Swimming

DANDLBERGALM

Look for the Dandlbergalm at a 770 m high mountain pasture, located in the hiking and holiday area of the Samerberg. It takes you about 1.5 hours from Rosenheim to ride to the hiking set off point by bike. You cycle along the river Inn on the cycle path in direction of Kufstein, Austria. Shortly after the village Neubeuern you lock your bike close to the lake Neubeuern/Neubeurer See. Next to the lake (which is very inviting for summer swims), you will turn left and hike up about 45 min to the Dandlbergalm and enjoy a beer in the sunset.

Address: Dandlbergalm, Dandlberg 1, 83122 Samerberg
obacht@dandlbergalm.de, +49 (0)8032 706-0



>> www.komoot.com (Route)

HIKING BUS TO SAMERBERG

Hop on the hiking bus to Samerberg on Sundays or on holidays from 1 May to Oktober. From Rosenheim you just pay € 1.00. The bus also takes your bike. Please call in advance if you are a group: +49 (0)8031-35 49 50

Costs

€ 1.00 / one way

>> <https://samerberg.de/wanderbus-samerberg> (Info only in German)



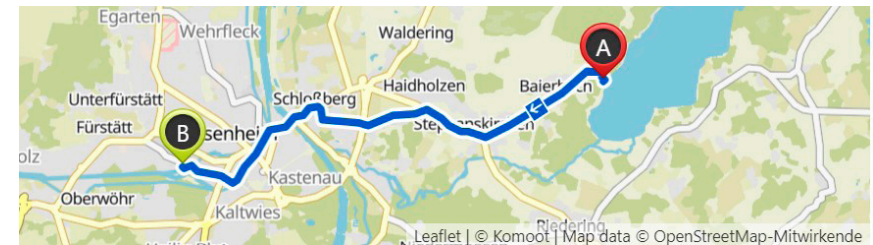
Picture: Tatjana Erlewein

SIMSSEE

Have fun at the beautiful beaches of lake Simssee in the foothills of the Alps (Alpenvorland). In a 40 min bike ride from Rosenheim you reach the south banks of the lake with an elevation of 470.1 m and a surface area of 6.5 km². In the summer months, the Simssee invites you to go swimming, sunbathing or just relaxing. You can also enjoy a bike ride around the lake with beautiful views which takes about 1:15 hours.

Address: Simssee, Badeplatz Baierbach, 83071 Stephanskirchen

>> www.simssee.de



>> www.komoot.com (Route)

NATURE BATH SAMERBERG (Naturbad Samerberg Filze)

Hop on your bike for a day trip to the beautiful nature bath of Samerberg. The 18 km bike ride gets only steep uphill for the last 3 km. You will be rewarded by the untouched nature between Törwang and Grainbach at Samerberg with wonderful views over the valley and down to Rosenheim. The completely redesigned system of the nature bath convinces with a perfect water quality: The used water is biologically cleaned constantly on plant and sand filters. Cozy wooden decks, spacious lawns and a playground for the little swimmers complete the great offer. It is free of charge with wonderful nature.

Address: Naturbad Samerberg Filze, 83122 Samerberg

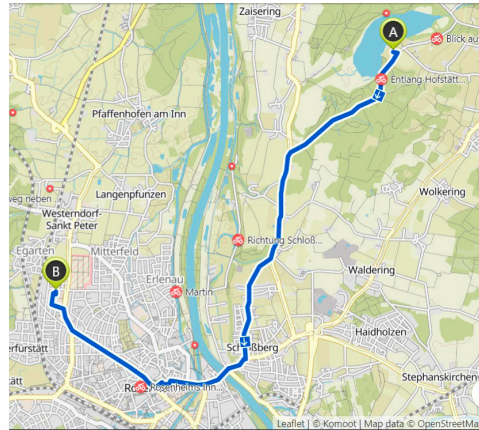


Picture: Tatjana Erlewein

HOFSTÄTTER SEE

Visit the picturesque lake Hofstätter See in Prutting, which you easily reach within a 40 min bike ride. At the lake you can find pure nature and the warmest water in Rosenheim's surrounding areas. It also has a wonderful beach house. A walk around the lake makes your visit a perfect day.

Address: Hofstätter See
Forst am See 3
83134 Prutting

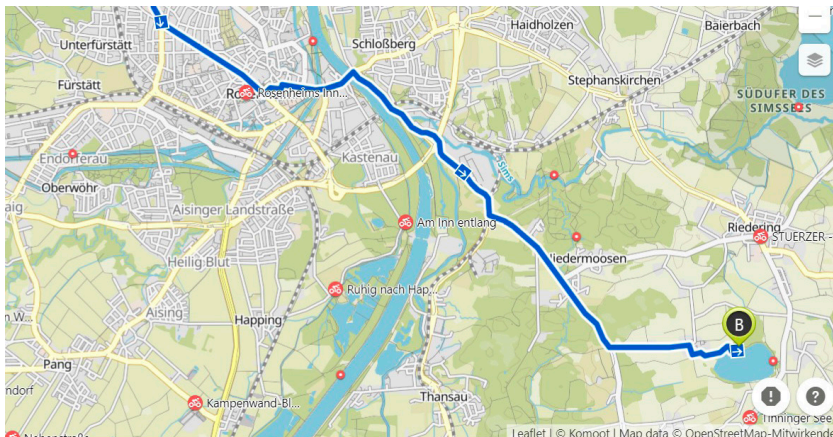


TINNINGER SEE

Ride your bike 10 km up to beautiful lake Tinninger See, which is located near Riedering in the Upper Bavarian district of Rosenheim. Try out some surfing on the moorland lake or just hike around the lake, which takes about 2 hours.

On the way to the lake you find a viewpoint at Schloßberg which offers a nice look out to Rosenheim.

Address: Tinninger See, 83083 Riedering



I think the location is really nice, you can enjoy beautiful landscape and in just a few minutes you are in a different country like Austria. Enjoy fresh air and outdoor activities.

Ana Gabriela López, Student from Mexico



OUTDOOR SWIMMING POOL

Come for a swim to the Rosenheim outdoor pool which with its three pools offers you refreshing water fun for all ages. The swimming pool in Rosenheim is a small holiday from everyday life! An extensive wellness offer ensures pure relaxation. It is closed for winter. For opening hours please check the website.

Address: Chiemseestraße 14, 83022 Rosenheim, freibad@swro.de,
+49 (0)8031 3652840

>> www.swro.de/baeder/freibad

FLYING FOX / SUMMER SLEDDING

Enjoy the spectacular adventure of flying down the mountain in a very safe way at the „Hocheck“ in Oberaudorf. For those who cannot get enough you can also try out the speedy summer sleds down the hill. The mountains around Oberaudorf are also an awesome place for hiking. The perfect spot to spend the day.

How to get there?

By train: Take the train from Rosenheim main train station to Oberaudorf. From there you will walk 30 min to the cable car Hocheck Oberaudorf.

Costs

Train ticket: € 8.40 one way
Cable car: € 9.90 per ascent sledding inclusive
6 tickets: € 45.90 (can be shared)
Flying fox: € 28.90
3 in one: € 39.90 (2x cable car, flying fox, sledding, free-fall sled)

Address: Carl-Hagen-Straße 7, 83080 Oberaudorf, +49 (0)8033 3035-0

>> <https://www.hocheck.com/sommer-rodelbahn/>



Picture: Tajana Erlenwein

LAKE CHIEMSEE

Visit Bavaria's largest lake, which is only a half an hour train ride from Rosenheim. A beautiful boat ride will take you to the famous islands "Fraueninsel" (women's island) and "Herreninsel" (men's island). Admire many local artists shops at the women's island and get some beautiful souvenirs. The little island is also known for its monastery and the monastery's shop which sells local products. The impressive castle "Schloss Herrenchiemsee" will give you an insight of King Ludwig II whose life was full of mysteries.

How to get there?

By train: Take the train from Rosenheim main train station to Prien am Chiemsee (20 min) and then walk from the train station to the lake (around 20 min) or take a fanciful steam train which takes visitors from the train station directly to the Stock-Hafen Pier. From the Pier of Prien am Chiemsee the boat rides start to both men's island (Herreninsel) and women's island (Fraueninsel).

Costs

Bayern Ticket: € 27.00 plus € 9.00 per extra passenger (max 4)
Ship: big roundtrip € 17.10 (includes both islands)
Island tour West € 11.60
only in summer (Mai-Sep)

Address: Seestr. 108, 83209 Prien am Chiemsee,
info@chiemsee-schiffahrt.de, +49 (0)8051 609-0

>> www.chiemsee-schiffahrt.de/

>> www.herrenchiemsee.de

Winter Activities

Hiking and Sledding

SKI AREA „HOCHECK“

Sled down the prepared track at the ski area „Hocheck“ in Oberaudorf and also enjoy a traditional Bavarian meal at the restaurant on top of the mountain. Hire your sled from the Top of the Mountain bike and Ski Store at the bottom. Sledding at night is a specific adventure and possible at four nights of the week when the track is illuminated until 9:00 pm. The use of the sled slope is free of charge. Please check current cable car operation and costs at the website.

How to get there?

By train: Take the train from Rosenheim main train station to Oberaudorf. From there you will walk 30 min to the cable car Hocheck Oberaudorf.

Costs

Train ticket: € 8.40 one way

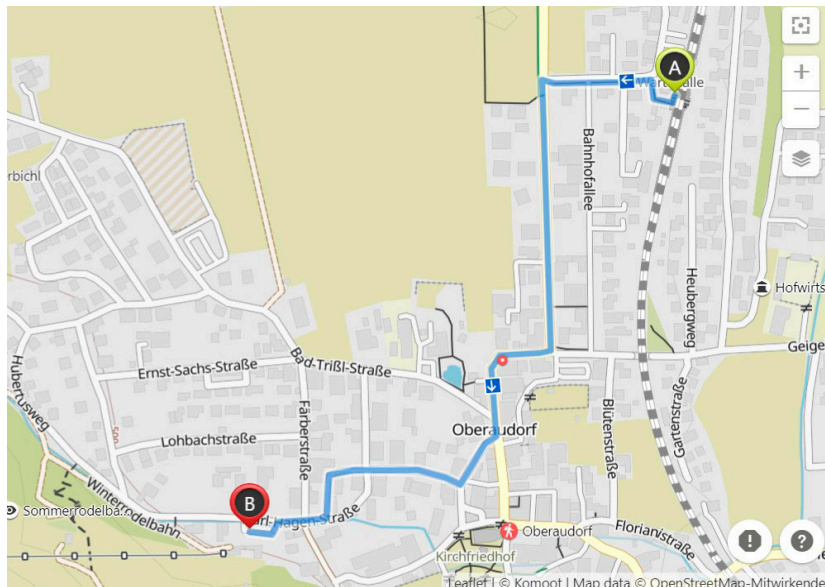
Cable car: € 9.90 per ascent

Sled: from € 6.00

Address: Carl-Hagen-Strasse 7, 83080 Oberaudorf, +49 (0)8033 3035-0

>> www.hocheck.com

>> www.toponmountain.com/bike-und-ski-store-oberaudorf.html



Picture: Tatjana Erlweine

„BERGHAUS ASCHENBRENNER“ KUFSTEIN (AUSTRIA)

Hike up for approx. 2 hours to the Berghaus Aschenbrenner and enjoy the most beautiful view over the city of Kufstein with its historical fortress. You have to bring your own sled and speed down the long sled track along the forest road which is prepared in winter.

How to get there?

By train: Take the train from Rosenheim main train station to Kufstein (around 30 min). Pass the small and scenic city of Kufstein along the impressive knightly fortress and walk up the mountain.

Costs

Train ticket: € 11.30 one way or

Bayern Ticket: € 27.00 plus € 9.00 per extra passenger (max 4)

Address: Stadtberg 14, 6330 Kufstein, Austria, +43 (0)5372 62220

Opening hours: Mon closed
Tue – Sat 9:00 am – 11.30 pm
Sun/public holidays 9:00 am – 6:00 pm

>> www.berghaus-aschenbrenner.com



Picture: Tatjana Ertwein

INDOOR SWIMMING POOL (Hallenbad)

Check out the indoor swimming pool in Rosenheim with a water temperature of 28°. There is also a sauna with a relaxation area, a solarium area, and a separate baby-pool with 32°. Enjoy special offers like water aerobics and aquazumba.

Address: Stemplingerstraße 1, 83022 Rosenheim, hallenbad@swro.de
+49 (0)8031 365 -2830

>> www.swro.de/baeder/hallenbad

ICE SKATING

The Rofa-Stadium is the venue for the Rosenheim ice hockey club Star Bulls but also accessible to the public for ice skating. You can rent your ice skates at the entrance for a fee. Please check the website for opening hours and fees.

You might even find ice skating at Christmas markets. For example in Wasserburg.

Address: Rofa-Stadion (Eisstadion), Jahnstr. 1, 83022 Rosenheim,
+49 (0)8031 365-1427

>> <https://rosenheim.jetzt/touristinfo/sehenswuerdigkeiten/sportstaetten/rofa-stadion-eisstadion>

CHRISTMAS MARKETS

Be part of the wonderful Christmas market season, when Bavaria's cities, towns and villages are filled with Christmas magic. The Christmas market season runs throughout the Advent period, from the end of November to the third week of December.

You will find the markets at almost any town square and each has its own unique atmosphere. But common threads include: decorated stalls heaped with traditional Christmas decorations, toys, gifts and the aromas of mulled wine, grilled sausages, Christmas biscuits and gingerbread. Christmas carol singing and Christmas concerts usually coincide with the markets, which are generally open seven days a week and run well into the evenings until around 8:00 pm.

>> www.bavaria.by/christmas-markets-bavaria-germany



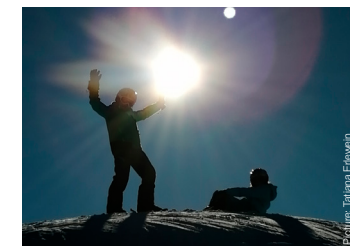
CHRISTMAS MARKET
ROSENHEIM



SKIING THE ALPS



ICE SKATING WASSERBURG
CHRISTMAS MARKET



SNOWSHOEING

City Trips Around Rosenheim



Picture: USama Shehroz

MUNICH

Take the train to Munich, the capital of Bavaria and gateway to the Alps, which is one of the most beautiful cities in Germany. It offers first class museums and traditional German architecture and a salute to Bavaria's royal past. Get a true taste of Munich's hospitality, culture and world-famous beer at its Oktoberfest, which attracts more than 6 million visitors every year.

How to get there?

By train: Take the train from Rosenheim main train station to Munich main station. It takes about 40 min.

Costs

Bayern Ticket: € 27.00 plus € 9.00 per extra passenger (max 4)

Touristinformation

Central Train Station
Bahnhofplatz 2
80335 München

City Hall
Marienplatz 2
80331 München

+49 (0)89 233-96500

tourismus.gs@muenchen.de

>> www.munich.travel/en

ENJOY CITY TRIPS

- **MUNICH**
 - **WASSERBURG**
 - **SALZBURG**
 - **INNSBRUCK**
- are just around
the corner.**

WASSERBURG

With its scenic location, Wasserburg am Inn offers a special feature: the old town is almost completely surrounded by the Inn river (about 7/8), which can only be reached via a narrow landmark. From high steep, the Innleiten, you can see the whole city. It is a wonderful place for a day trip.

How to get there?

By train: Take the train from train station "Rosenheim Hochschule" (university) to Wasserburg am Inn. It takes 25 min. From the train station in Wasserburg you can take one of the buses to get to the city centre. The buses run every hour.

By bike: It takes about 1.5 hours to get by bike from Rosenheim to Wasserburg (26 km). You have to cycle along the river Inn (cycle path direction Wasserburg/Passau).

Costs

Train ticket: € 8.40 one way

Touristinformation

Marienplatz 2, 83512 Wasserburg am Inn, +49 (0)8071 105-22, touristik@wasserburg.de

>> www.wasserburg.de/en/sightseeing/impressions



Picture: Tajana Erlewein

SALZBURG

Visit the fourth largest city of Austria with its unique „Old Town“ (Altstadt) which is internationally renowned for its baroque architecture and is one of the best-preserved city centres north of the Alps. It was listed as a UNESCO World Heritage Site in 1997. The city has three universities and a large population of students. Tourists also frequent the city to tour the city's historic centre and the scenic Alpine surroundings. Salzburg was the birthplace of 18th-century composer Wolfgang Amadeus Mozart. Try out the well known chocolate treat the „Mozartkugeln“.

How to get there?

By train: Take the train from Rosenheim main train station to Salzburg main train station (1 hour). It takes you about 24 min from the train station to the city centre walking.

Costs

Bayern Ticket: € 27.00 plus € 9.00 per extra passenger (max 4)

Touristinformation

Salzburg, Austria, +43 (0)662 889870, tourist@salzburg.info

>> www.salzburg.info/en

INNSBRUCK

Spend a splendid day or even weekend in Innsbruck, the capital city of Tyrol in western Austria. It is located in the Inn valley, at its junction with the Wipp valley, which provides access to the Brenner Pass some 30 km (18.6 mi) to the south. Innsbruck is an internationally well known winter sports centre, and hosted the 1964 and 1976 Winter Olympics as well as the 1984 and 1988 Winter Paralympics. Innsbruck also hosted the first Winter Youth Olympics in 2012. The city's name translates as „Inn bridge“ which refers to its location directly at the Inn river.

How to get there?

By train: Take the train from Rosenheim main train station to Innsbruck train station (1:05 hours). From the Innsbruck train station you can walk to the city centre (10 min).

Costs

Train ticket: € 32.00 one way (Bayern Ticket is not valid)

Touristinformation

Burggraben 3, 6021 Innsbruck, Austria, +43 (0)512 59850, office@innsbruck.info

>> www.innsbruck.info/en



Other Trips / Activities

Culture and Sports

SALT MINE BERCHTESGADEN (Salzbergwerk)

Discover the Berchtesgaden salt mine which is the oldest active salt mine in Germany. The salt here is mainly extracted by “wet mining” and the mine is a highlight sight in the Salzberg district of Berchtesgaden. In the salt mine there is a slide and a magical salt room. You can learn a lot about the mining that takes place beneath the mountains and should not be missed.

How to get there?

By train: Take the train from Rosenheim main train station to Berchtesgaden train station (1:50 hours) and then walk 26 min to the Salzbergwerk (salt mine).

Costs

Bayern Ticket: € 27.00 plus € 9.00 per extra passenger (max 4)
Entrance: € 20.00 (for students 17-25 years - not online available)

Address: Salt Mine Berchtesgaden, Salzburger Straße 24,
83471 Berchtesgaden, +49 (0)8652 6002-0, info@salzbergwerk.de

>> www.salzbergwerk.de/en

INDOOR CLIMBING GYM

Get some activity at the indoor climbing gym, located in Stephanskirchen very close to Rosenheim. With about 2,000 m² of climbing surface and a maximum wall height of 15 m, it is one of the largest halls in southern Germany and provides a variety of routes for every level. You can also train your skills at an outside climbing wall if the weather allows and two indoor boulder halls. The facility also runs a restaurant, a beergarden, and a shop for climbing equipment.

Costs: € 12.50 (daily entrance)

Opening hours

Mon – Fri 10:00 am – 11:00 pm
Sat/Sun 9:00 am – 10:00 pm

Address: Finsterwalderstr. 4, 83071 Stephanskirchen, +49 (0)8031 8094850

>> www.kletterhalle-rosenheim.de

LASERTAG

Enjoy a Lasertag game at the 750 m² the Blackfox Lasertag which is known as the largest indoor lasertag, paintball and nerf arena in southern Bavaria. The arena is close to the main train station in Rosenheim.

Opening hours

Mon – Thu 2:00 pm – 10:00 pm
Fri 2:00 pm – 1:00 am
Sat 10:00 am – 1:00 am
Sun/public holidays 10:00 am – 10:00 pm

Address: Blackfox Lasertag, Klepperstraße 18, 83026 Rosenheim,
+49 (0)8031 5818670 info@blackfox-lasertag.de

>> www.blackfox-lasertag.de



Picture: Tatjana Erlenwein



Picture: Tatjana Erlenwein



Picture: Team F&C, Tharovsky

BIKE PARK SAMERBERG

Ride your bike up to the Samerberg Bike Park, where you can practise your downhill mountainbike skills. The park is not far away from the natural bath Samerberg. Rent a downhill bike at the bike shop close to the single seat lift, which takes you and your bike up to the middle station. Then you just try out jumps and the parcour downhill. Those who do not dare to go downhill can either practise starter skills in the mini parcour at the middle station or just enjoy the day at the Käsalm and have some food. Alternatively you hike the Hocheck up to the summit and reward yourself with a spectacular view of the Alps.

Costs

Bike Park entrance fee: € 22.00 / day ticket
 Lift ticket: € 22.00 (10 rides) or € 14.00 (5 rides)
 Day bike rental: € 75.00 / day or € 55.00 / to or from 1:00 pm

Opening hours (1 April - 31 October)

Mon – Sun 10:00 am – 5:00 pm / 6:00 pm

Address: Hochriesstraße 69, 83122 Samerberg
 +49 (0) 8032 / 95 90 790, info@bikepark-samerberg.de

>> www.bikepark-samerberg.de

General Information

Public Holidays in Bavaria

PUBLIC HOLIDAYS

| Holiday local name | (in German) | Date |
|----------------------------------|------------------------------|-------------------------|
| New Year's Day | (Neujahrstag) | 01 January |
| Epiphany | (Heilige Drei Könige) | 06 January |
| Good Friday | (Karfreitag) | Easter Sunday - 2 days |
| Easter Monday | (Ostermontag) | Easter Sunday + 1 day |
| Labor Day | (Tag der Arbeit) | 1 May |
| Ascension Day | (Christi Himmelfahrt) | Easter Sunday + 39 days |
| Whit Monday | (Pfingstmontag) | Easter Sunday + 50 days |
| Corpus Christi | (Fronleichnam) | Easter Sunday + 60 days |
| Assumption Day | (Mariä Himmelfahrt) | 15 August |
| German Unity Day | (Tag der Deutschen Einheit) | 3 October |
| All Saints | (Allerheiligen) | 1 November |
| Christmas Day | (Weihnachtstag) | 25 December |
| St Stephen's Day / Boxing Day | (Zweiter Weihnachtsfeiertag) | 26 December |

USEFUL WEBSITES

| | |
|---------------------------------|--|
| Public transport | www.reiseauskunft.bahn.de |
| Guide to Bavaria | www.guide-to-bavaria.com www.bavaria.by |
| Chiemgau region | www.chiemsee-alpenland.de |
| Route planner (bike/hike trips) | www.komoot.de |
| Christmas markets in Bavaria | www.bavaria.by/christmas-markets-bavaria-germany |

USEFUL APPS

| | |
|--------------------|--|
| DB Navigator |  |
| Chiemsee Alpen App | www.chiemsee-alpenland.de/entdecken/touren/app |

Fun Things to Do In Burghausen

Reach all the fun destinations also from our campus in Burghausen. The campus is located in the Chemistry triangle (Chemdelta) at the border to Austria. Only the river Salzach separates Germany from Austria at this part of Bavaria.

World-longest Castle

Stroll through the medieval world-longest castle and enjoy the amazing view over the city of Burghausen. Visit the museum, get to know more about the history of the castle in one of the tours and have some food or a coffee at the Castle Café. Cross the river Salzach over to Austria. Hike up the hill and make it all the way to the picture frame to get your photo shot of the Burghausen castle.

Further Attractions in Burghausen

The old town lies at the feet of the impressive castle with its colorful houses in the Inn-Salzach style.

The rococo pearl Marienberg and the baroque monastery complex Raitenhaslach are among the beautiful „highlights“ of a stay in Burghausen. Three museums in the castle offer captivating history, packed in different locations: The House of Photography, the City Museum and the State Collection.

Many vantage points offer fantastic views over Burghausen's attractions, buildings, green spaces, churches and much more.

>> www.visit-burghausen.com/en

Tourist Information

Stadtplatz 99, 84489 Burghausen, +49 (0) 8677 887140



In Traunstein

Located in the heart of the historical city Traunstein, you easily reach our Campus Chiemgau within 36 min on public transport from Rosenheim. As you can see from this brochure there are a lot of fun things to do around Traunstein. Find out more about the city itself: the history of the saltworks, beer traditions, regional markets and meaningful bavarian traditions. Incredible but true: soon you will be able to enjoy surfing at the newest river surf wave in Traunstein!

Salinenpark - Outdoor Museum

Learn about the 400-year old history of the saltworks and the influence on the city of the worlds' first salt pipeline built in 1619. The park is free of charge.

Beer Tradition - Vital Art of Brewery

Follow one of the beer tours and find out why Traunsteins breweries have been known as the best breweries for a long time. Visit a beergarden and try the special regional beers. >> www.chiemsee-chiemgau.info/en/experience-beer

Chiemgauwelle - River Wave Surfing

The Chiemgau River Wave is being built and hopefully can be finished for operation shortly. At the confluence of the Mühlbach spectacular surfers will soon show their skills. Come here to watch or just do it yourself. >> www.chiemgau-welle.de/

>> www.chiemsee-chiemgau.info/en

Tourist Information

Stadtplatz 39
83278 Traunstein
+49 (0) 861/65-500



Out of Rosenheim

Mountains, Lakes, City and More



1 Rosenheim
Modern Campus at TH Rosenheim



2 Burghausen
Campus in the Chemdelta. City with the amazing world-longest castle.



3 Traunstein
Campus close to lakes and mountains in the Chiemgau Alps.



4 Sudelfeld Ski Resort
From your lecture to the slopes in only 30 minutes



5 Kampfenwand
1,669m high, triple-peaked rock formations with a view of the Chiemgau



6 Chiemsee
The "Bavarian Sea": beach, islands and more. Only 20 minutes away



7 Munich
Big city flair – just a 30-minute train ride away



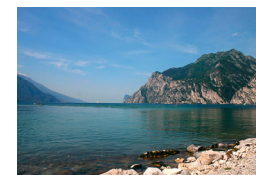
8 Hochries
Paragliding, mountain biking, cabin charm and much more



9 Salzburg
World heritage site and festival city – just 1 hour away by train



10 Kaisergebirge
Climbing, skiing, canyoning etc. in just 30 – 45 minutes



11 Lake Garda
Windsurfing and la dolce vita in the heart of Italy in just 3 hours



12 Italy's Adriatic Coast
Just 4 hours to the Adriatic Coast, there isn't a faster route from Germany

Technische Hochschule Rosenheim Technical University of Applied Sciences

Contact

International Office
Hochschulstrasse 1
83024 Rosenheim, Germany
Telephone +49 (0)8031 805-2118
international@th-rosenheim.de



Disclaimer of liability: TH Rosenheim International Office does not guarantee that the information provided in this brochure is complete, accurate and always current.